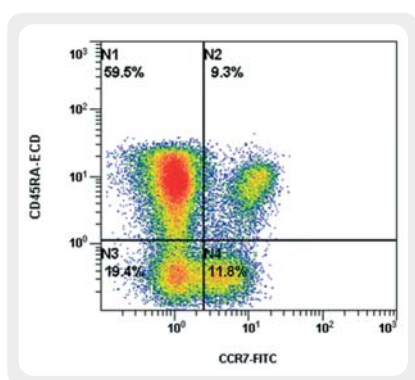


## Immune Monitoring

Thymed offers a wide range of standard and custom assays for monitoring cellular, humoral and innate immunity within the framework of clinical trials. These help you define and visualize both wanted and unwanted immune responses to your novel vaccine, therapeutic or pharmaceutical, thereby empowering you in your decision-making process and providing crucial information for regulatory authorities, particularly in the early phases of clinical development.

Assays range from simple ELISAs to multicolour flow cytometry, complex multiplex assays and cell-based functional assays and include, but are not limited to:

- Project-specific ELISAs
- Cellular immunophenotyping
- Tetramer analysis
- Intracellular cytokine staining (ICS)
- ELISpot
- Microbead arrays (TH1/TH2 cytokines, chemokines, cardiovascular markers)
- Cell-mediated immunology testing and functional assays



### The Essentials

- **Material Requirements** - assay dependent - please enquire
- Suitable for **Clinical Phases I to IV**
- Enables detailed **characterization** of immune response and potential identification of companion biomarkers/diagnostics
- Permits **Correlation** with disease progression/treatment
- Detects unwanted **immunotoxicity, immunogenicity** and **immunosuppression**

Thymed provides immune monitoring services to pharmaceutical and biotechnology companies and other organizations performing clinical trials across 5 continents, with particular focus on Eastern and Western Europe and North America.

Located 45mins from Frankfurt International Airport, in the heart of Europe, Thymed boasts excellent logistics. Thymed's well-equipped, state-of-the-art laboratories and specialty testing services are ISO 9001 certified and conform to GLP.

